

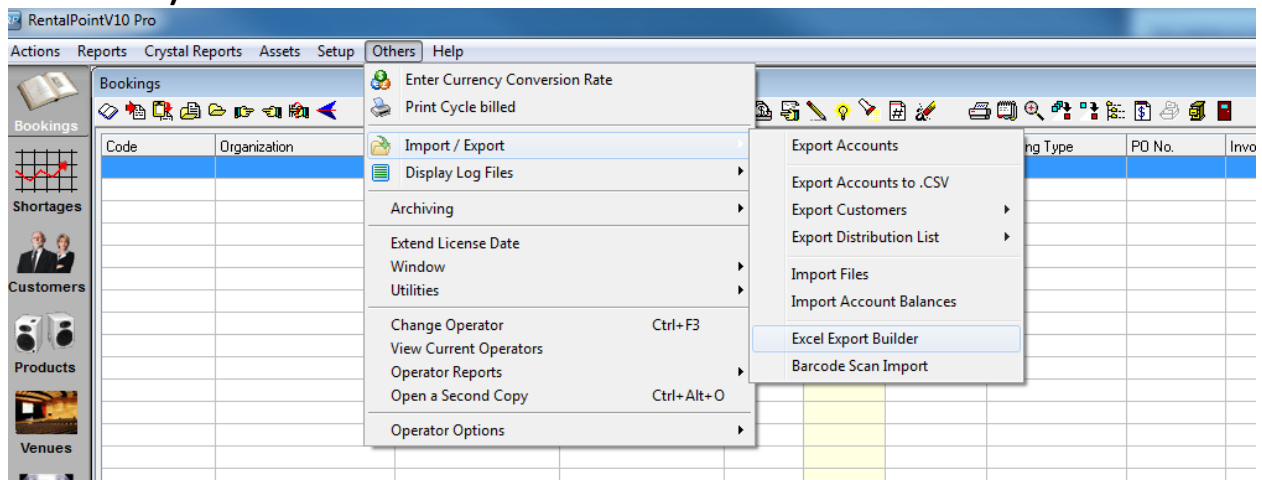


RentalPoint Excel Query Builder

Occasionally you may find the need to retrieve information from RentalPoint that is not provided in standard reports. By using the Excel Query Builder you can write an SQL query to retrieve information from the database and display it in an Excel spread sheet.

If you are familiar with SQL and the RentalPoint tables you can write your own query. If not, you can contact RentalPoint support and our support team can assist you in finding the information you need.

1. Access the Excel Query Builder via (Others --> Import / Export --> Excel Query Builder)





2. Enter the Query you want to run (save it for future reference), then choose 'Export data'

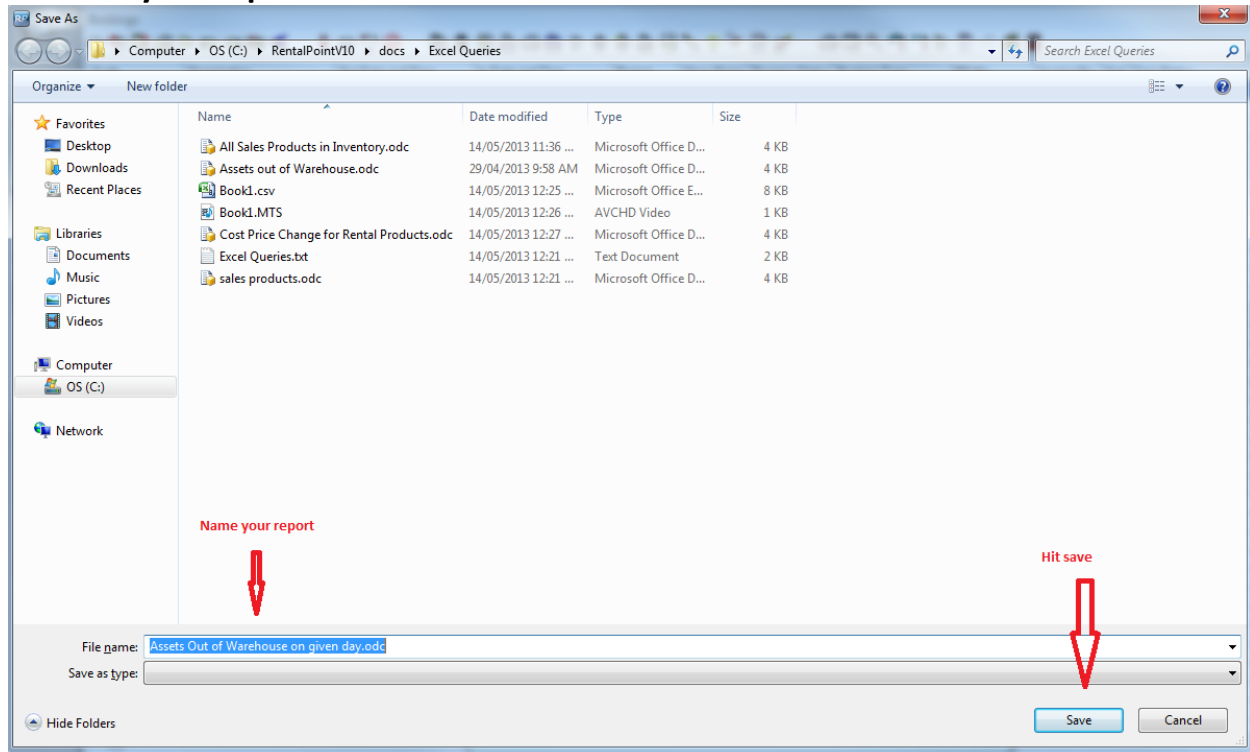
The Excel Query Builder window is titled "Excel Query Builder" and has a close button (X) in the top right corner. It contains the following fields and controls:

- Database Name:** Demotest
- SQL Server Name:** RPWS-22\SQLEXPRESS
- Authentication Method:** Windows Authentication
- Query Selection:** A dropdown menu showing "Assets Out of Warehouse on given day".
- SQL Query:**

```
SELECT A.product_code [Product Code], A.asset_code [Barcode],  
A.DESCRPTION [Asset Description], AT.booking_no [Out on booking],  
AT.ActOutDate, AT.ActInDate FROM tblasstran AT INNER JOIN  
tblasset01 A ON A.product_code = AT.product_code and A.stock_number  
= AT.stock_number WHERE AT.ActOutDate < '2012-01-01' and ActInDate  
> '2012-01-01' ORDER BY A.product_code, A.asset_code, AT.booking_no
```
- Buttons:** New, Edit, Delete, Export Data, Close.



3. Save your report



4. Double Click in your report in the directory you saved it to via 'save as' above, you will get a security notice. Click 'Enable' to see your data.

