

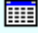


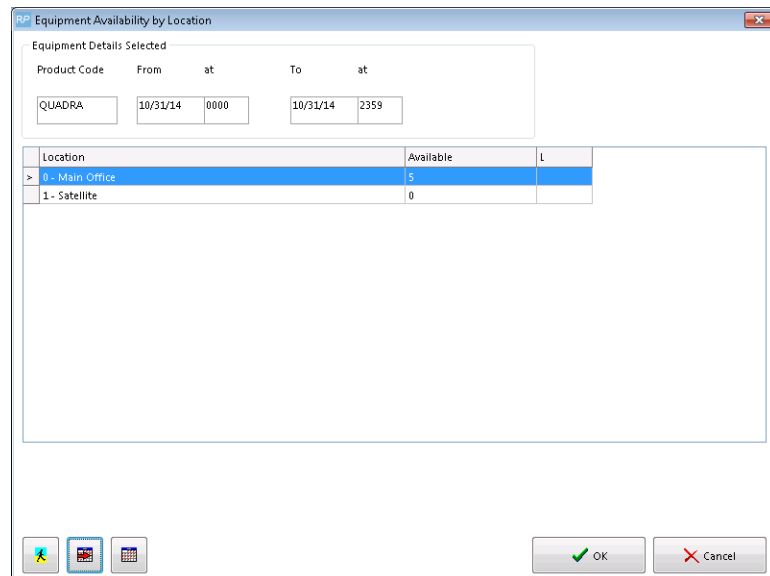



The main products area contains tools and utilities relating to inventory. It has a wide range of options including availability tools, reports, maintenance, general product information and asset information. This article provides a brief description of each option, with links to additional articles.

Tool	Icon	Description
Setup Products		Launches the inventory setup window (F10). Within the root structures you can create Groups, Categories, Subcategories, Products and Assets. For more information click here .
Availability Calendar		Run on a single product to display the lowest quantity on hand for each day. For more information click here .
Plot Sheet		Run on a single product to view graphical representation of all bookings that use that product for the specified time period. For more information click here .
Running Balance		Lists all bookings for a product, sorted by warehouse date and time. For more information click here
Show Availability in All Locations		Displays stock quantities in all locations. Availability is calculated for a single day. Select a date to view.



Product History Report		Provides access to the Product History Report with pre-selected product scope according to the product selected from the tree. The Product History Report retrieves information about past transactions of a product. Details are compiled from both current and archived bookings and are listed in Warehouse Out Date order. Other information such as Total Cost Value, Amount Earned and ROI figures are also displayed.
------------------------	---	--

RP Product History Report
✕

Select Dates

Select Month

Jan

Feb

Mar

Apr

May

Jun

Jul

Aug

Sept

Oct

Nov

Dec

Start Date (Inclusive)

Ending Date (Exclusive)

List Transactions

Yes

No

With Percentage Bar

Yes

No

Display Options

Detailed

Summary

Sort Order

Group

Category

Product

Select a Product

Print To

Printer

Screen

Word Processor

CSV

Other Options

Using Pre-Printed Forms

Use Showname instead of Project Description

Print Product Statistics

Exclude Items With Zero Quantity

Booking Status

Quote

Light Pencil

Heavy Pencil

Confirmed

Invoice Status

Invoiced

Uninvoiced

Location

All

Location

✔ Run

✕ Close

Price Overrides



Provides access to Price Override report with pre-selected product scope according to the product selected from the tree. This report details all the instances that a price has been manually overridden by an operator.

RP Price Override Report
✕

Between (Inclusive) and

or Select Month

Jan

Feb

Mar

Apr

May

Jun

Jul

Aug

Sept

Oct

Nov

Dec

Scope

Operator

Customer

Booking

Product

Salesperson

All

Sequence

Operator

Salesperson

Using Pre-Printed Forms

Print to

Printer

Screen

Word Processor

Select Product

✔ OK

✕ Cancel

Maintenance Costs



Displays maintenance history of a selected asset. You can also manage other maintenance operations from the **Maintenance Costs** window.

Actions Reports Crystal Reports Assets Setup Others Help

Bookings
Shortages
Customers
Products
Venues
Schedule
Crew Planner
Vendors
POs
Contacts
To-Do

Maintenance costs button. Shows maintenance history of the Asset.

P4-M2_ 1: Shure ULP4-M2 Professional Receiver [Barcode: 5019] [Serial:] [Model: ULP4-M2] [Location: 1 - Melbourne] [Status: In Warehouse]

P4-M2_ 2: Shure ULP4-M2 Professional Receiver [Barcode: 6019] [Serial:] [Model: ULP4-M2] [Location: 1 - Melbourne] [Status: In Warehouse]

P4-M2_ 3: Shure ULP4-M2 Professional Receiver [Barcode: ULP4-M2-01] [Serial:] [Model: ULP4-M2] [Location: 0 - Sydney] [Status: Out for service]

P4-M2_ 4: Shure ULP4-M2 Professional Receiver [Barcode: ULP4-M2-02] [Serial:] [Model: ULP4-M2] [Location: 0 - Sydney] [Status: In Warehouse]

P4-M2_ 5: Shure ULP4-M2 Professional Receiver [Barcode: ULP4-M2-03] [Serial:] [Model: ULP4-M2] [Location: 0 - Sydney] [Status: In Warehouse]

P4-M2_ 6: Shure ULP4-M2 Professional Receiver [Barcode: ULP4-M2-04] [Serial:] [Model: ULP4-M2] [Location: 0 - Sydney] [Status: In Warehouse]

P4-M2_ 7: Shure ULP4-M2 Professional Receiver [Barcode: ULP4-M2-07] [Serial:] [Model: ULP4-M2] [Location: 0 - Sydney] [Status: In Warehouse]

P4-M2_ 8: Shure ULP4-M2 Professional Receiver [Barcode: ULP4-M2-08] [Serial:] [Model: ULP4-M2] [Location: 0 - Sydney] [Status: In Warehouse]

P4-M2_ 9: Shure ULP4-M2 Professional Receiver [Barcode: ULP4-M2-09] [Serial:] [Model: ULP4-M2] [Location: 0 - Sydney] [Status: In Warehouse]

P4-M2_ 10: Shure ULP4-M2 Professional Receiver [Barcode: ULP4-M2-10] [Serial:] [Model: ULP4-M2] [Location: 0 - Sydney] [Status: In Warehouse]

P4-M2_ 11: Shure ULP4-M2 Professional Receiver [Barcode: 5001] [Serial: SN12345678] [Model: ULP4-M2] [Location: 0 - Sydney] [Status: In Warehouse]

P4-M2_ 12: Shure ULP4-M2 Professional Receiver [Barcode: 5013] [Serial:] [Model: ULP4-M2] [Location: 0 - Sydney] [Status: In Warehouse]

P4-M2_ 13: Shure ULP4-M2 Professional Receiver [Barcode: 56465456] [Serial:] [Model: ULP4-M2] [Location: 0 - Sydney] [Status: In Warehouse]

P4-M2_ 14: Shure ULP4-M2 Professional Receiver [Barcode: 123456789] [Serial:] [Model: ULP4-M2] [Location: 0 - Sydney] [Status: In Warehouse]

Ref. [10]	Faults	Repair Details	Labour Cost	Material Cost	Supplier Code	Out Date	Out Time	Return Date
	New Fault	New Repair	25.00	50.00		25/06/2014	0910	Unknown
	Faults	Details	50.00	100.00	NTE100	25/06/2014	0855	25/06/2014
	Broken		0.00	0.00		06/03/2012	1551	06/03/2012

All Asset transfers to maintenance with costs and other information.

Record Type: Cause scope

- All
- Damaged
- Faulty
- Test Required

You could add new record without affecting asset state

You could include/Exclude information about each maintenance record.

You could return Asset back to service, selecting last entered service record

You could add new maintenance record for a product that needs to be transferred to maintenance

You could edit existing record

OVERDUE Reminders Scan 30 MIN

Products Roadcases and Racks Maintenance

Scan Multiple Assets From Service Into Maintenance



Allows you to transfer items from service into maintenance. A maintenance record will be entered and the item will be removed from availability.

RP Scan Assets Out for Service

1
2
3
4
5

Enter Asset Barcode here

Enter Barcode

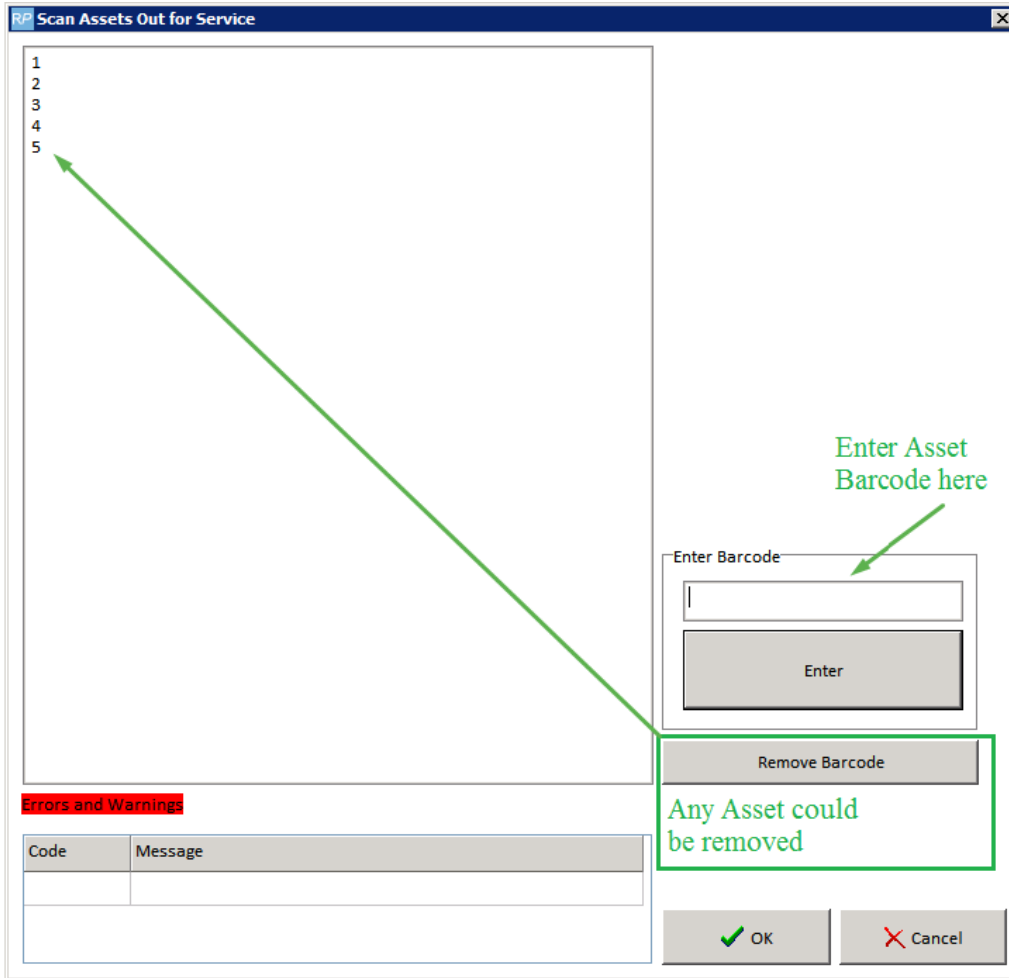
Enter

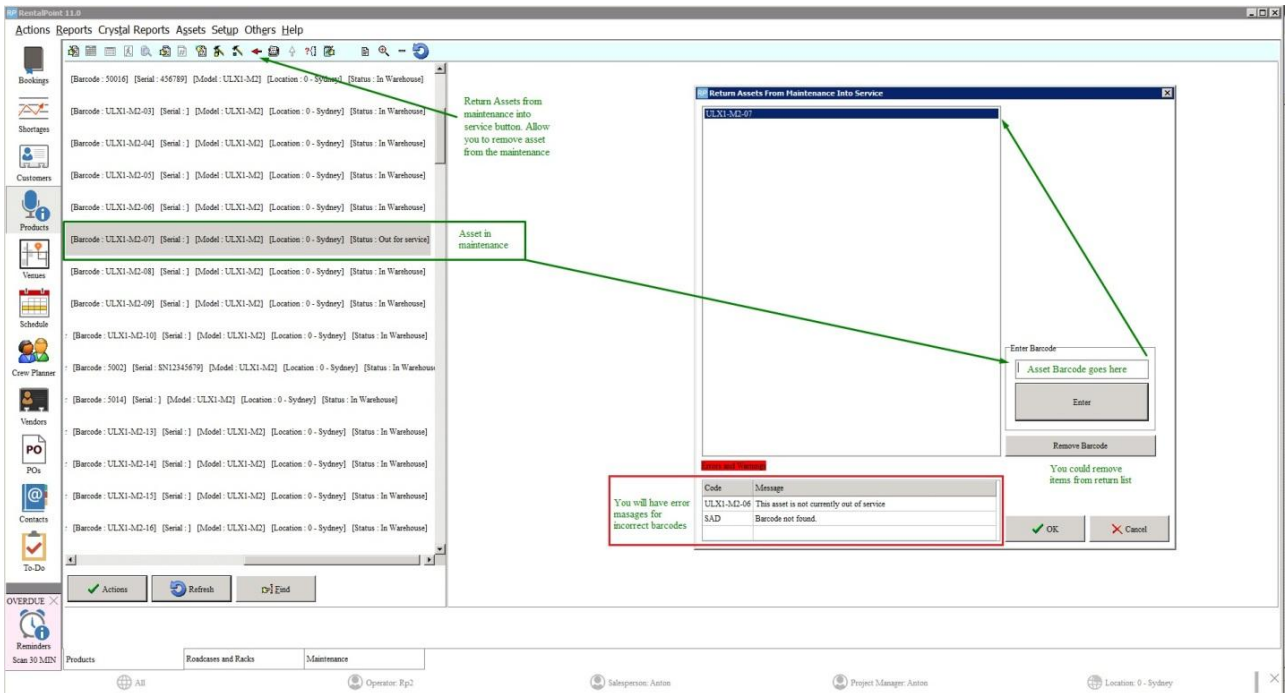
Remove Barcode

Any Asset could be removed

Code	Message

OK Cancel





Show Asset Movements



This option displays the current location of an asset (In Warehouse, Maintenance, Out on Booking etc).

Asset Movements for 5019 - Shure ULXP4-M2 Professional Receiver

Type	Date	Time	Booking No	Company	Venue	Project	Showname	Price	Opera
Out	18/06/2014	1420	ANTONJ0003	Vikas				225.00	RP2
In	18/06/2014	1433	ANTONJ0003	Vikas				225.00	RP2

Starting Date: 19/04/2014 | Ending Date (inclusive): 18/06/2014 | Amount Earned: 225.00

Scope: Current Bookings, Archive Bookings, Maintenance

Add New Stock



Increments the stock quantity of non asset tracked items.

Add Stock at location 1 - Melbourne

Product: Shure ULXP4-M2 Professional Receiver

Current Stock Quantity: 2

Quantity to Add: 0

New Stock Quantity: 2

Buttons: OK, Cancel

Asset Status



Displays the current status for all assets for a particular product.

The screenshot shows the 'Asset Status' window for 'Shure ULPX4-M2 Professional Receiver'. The window is divided into several sections:

- Left Panel:** A tree view of product categories. 'ULPX4-M2 - Shure ULPX4-M2 Professional Rec' is selected and highlighted with a green box.
- Top Right Panel:** A table listing individual assets with columns for Barcode, Description, Stock #, Serial #, Status, Due Back, Bin Location, and Location. All assets are currently 'In Warehouse'.
- Bottom Left Panel:** A list of actions: Asset Movements, Display Booking, Asset Notes, and Maintenance.
- Bottom Right Panel:** 'Current Quantity Statistics' showing 'In Warehouse' as 15 and 'Out on a Booking' as 0. There are also 'Refresh', 'Print', and 'Close' buttons.
- Annotations:** Green arrows point to the 'Asset status button' (top right), the 'Selected Product' (left panel), and the 'Asset Movements button' (bottom left).

Rental Prices



Provides information about rental rates, spatial dimensions, Cost price, Retail price, etc.

The screenshot shows the 'Rental Prices' window for 'Shure ULPX4-M2 Professional Receiver'. The window displays a table of rental rates and various pricing parameters:

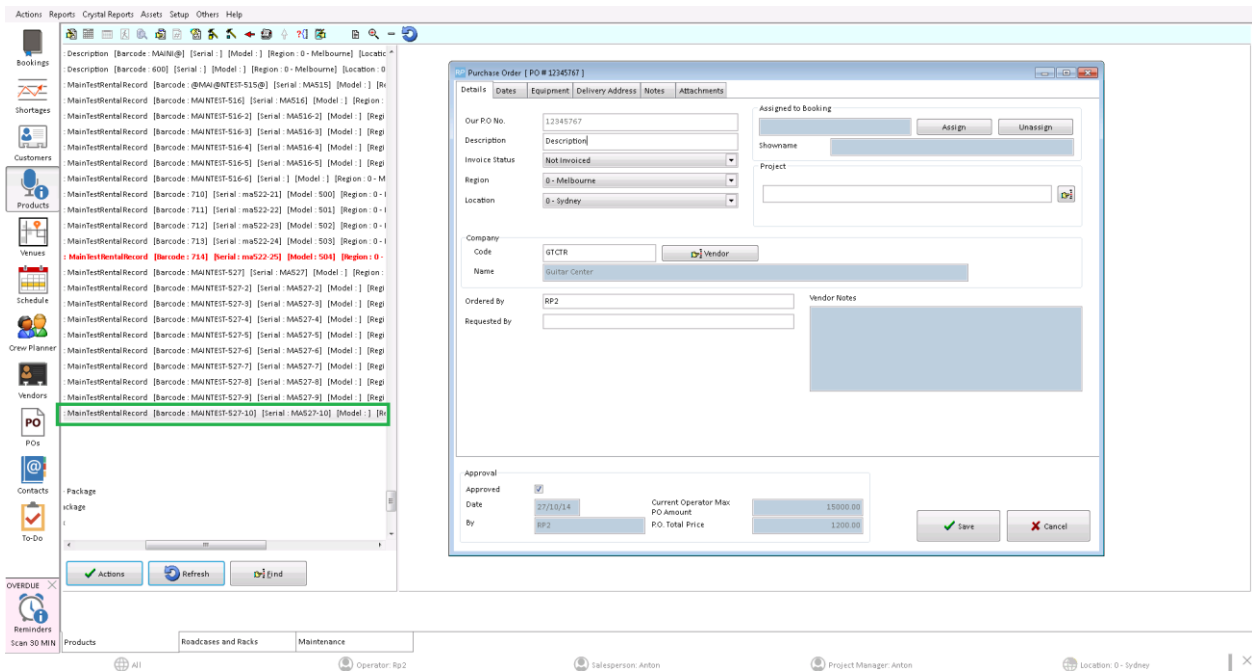
	1st Day	Extra Day	Weekly	Long Term	Uses	Currency	Replacement
Rate	75.00	75.00	225.00	675.00		Domestic	0.00

Below the table, there are fields for:

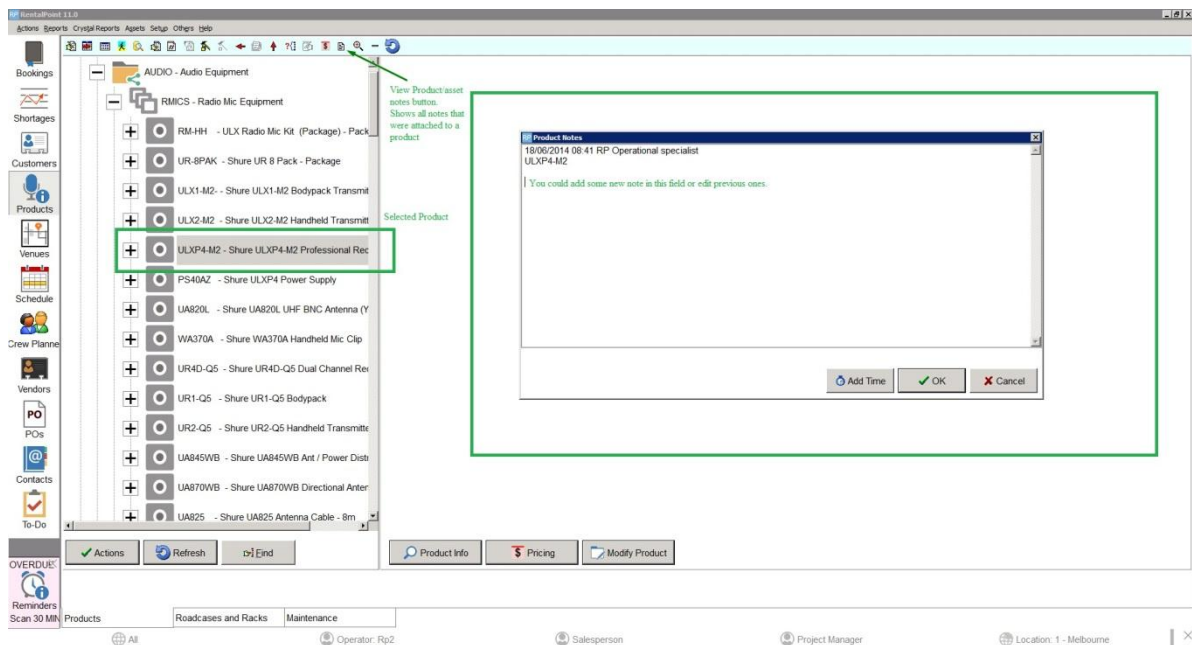
- Cost Price: 1.00
- Wholesale Price: 0.00
- Trade Price: 0.00
- Retail Price: 900.00
- Height: 0.2500000000
- Width: 0.9000000000
- Length: 1.5000000000
- Weight: 32.0000000000
- Volume: 0.3400000000
- Order Unit: [empty]
- Re-Order Level: 0.00
- Lead Time (in days): 0
- Quantity On Order: 0.00

The 'OK' button is visible at the bottom right of the window.

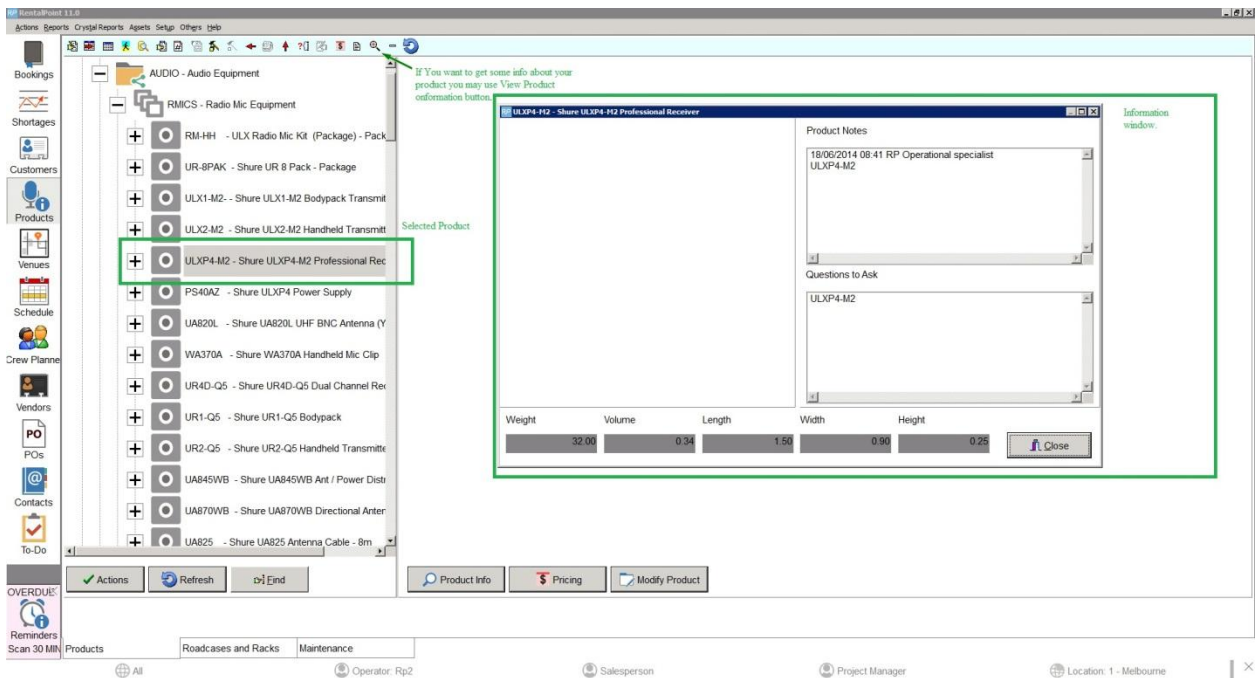
View PO for Selected Asset If the asset was entered into inventory via receiving a PO, that button will open the PO that the asset was received on

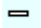


View Product/Asset Notes Displays all notes that were attached to a product.



View Product Information  Provides miscellaneous information about a product



Collapse All  Collapses all folders in the tree.

Refresh  Refreshes the inventory tree.